

TEAM RENE
REAL ESTATE

2305
HOMER DRIVE

BURLINGTON, ON



2305 HOMER DRIVE, BURLINGTON

4+1 Bedrooms | 3+1 Bathrooms | 3,019 Sq.Ft | 89'x136' Lot

Nestled in one of Burlington's most elite neighborhoods! Meticulously maintained 4+1 bedroom executive home offers exquisite living with high quality & tasteful finishes from Baeumler Construction. This home sits on a 89' x 136' lot, with 3019 sq ft, plus in-law suite in the lower level offering 1714 sq ft. This tranquil street is ideal for those who are looking for a quiet & peaceful lifestyle as you raise your family in this prestigious neighborhood. Striking curb appeal with professional landscaping & driveway that fits up to 7 cars. The backyard has been transformed into a resort-style oasis, with stunning pool & complete with a sleek Coverstar retractable safety cover. Bright & spacious foyer with direct access to a modern office, perfect for remote work. The cozy living room features Oak hardwood flooring & adjacent to the dining room which has lots of natural sunlight & picturesque views of the backyard. The kitchen is a chef's delight with large granite island, ample cabinets & spacious eat-in area, perfect for family gatherings. Additional features include décor backsplash, newer

hood range & direct access to large outdoor deck overlooking your backyard. Family room features hardwood flooring, fireplace, custom built-in shelving & large bay window with views of backyard. Upper level showcases hardwood flooring & newly installed carpet runner. Primary bedroom exudes elegance with a double door entry, large walk-in closet, & stunning spa-like ensuite with a standalone tub, glass shower & double sinks. Brand new high-quality main bathroom features double sinks, glass shower with waterfall matte tiles & stand-alone tub. Newer lower level is ideal for an in-law suite, featuring bedroom, high-end kitchen finishes with quartz countertops, custom cabinetry, stainless steel appliances, heated flooring in the 3-pc bathroom & separate laundry room. Step outside to your backyard paradise, complete with large deck overlooking the saltwater pool, surrounded by hedges & mature trees for privacy. Landscaping includes stone steps, patio stones, covered deck with a projector screen & a large rock border for added appeal. Come see for yourself!



LIVING ROOM



KITCHEN



DINING ROOM



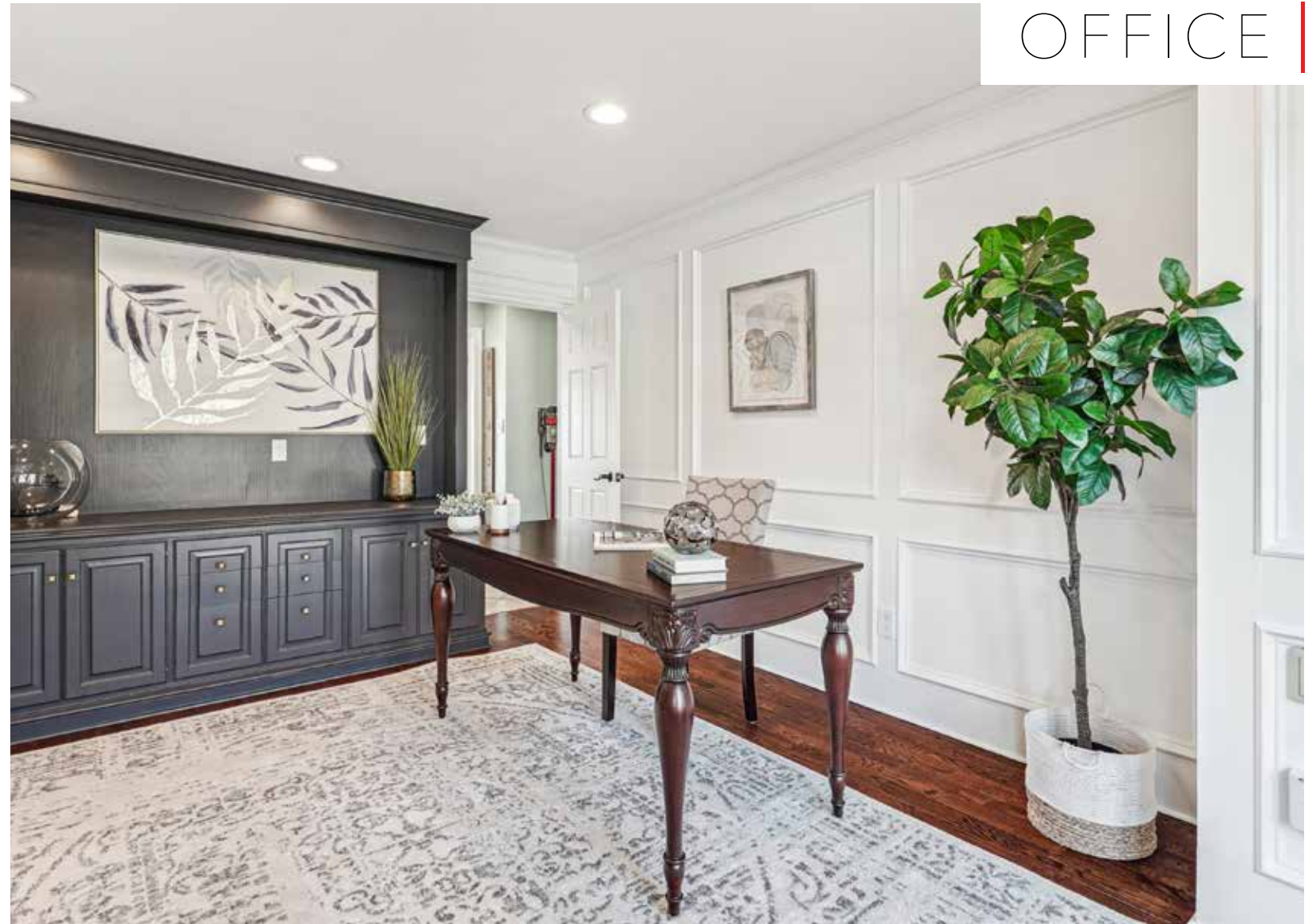
FAMILY ROOM



LAUNDRY



OFFICE



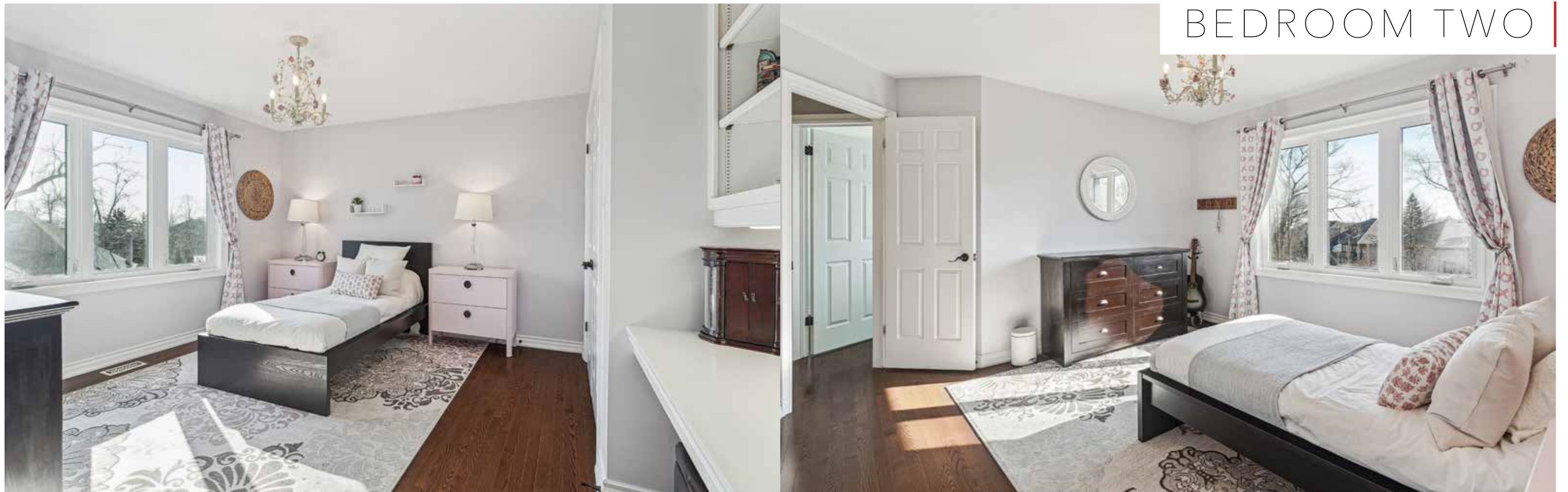
POWDER ROOM



BEDROOM ONE



BEDROOM TWO



BEDROOM THREE



FULL BATHROOM

PRIMARY BEDROOM



ENSUITE



LOWER LIVING ROOM



LOWER KITCHEN



LOWER OFFICE



LOWER BATHROOM



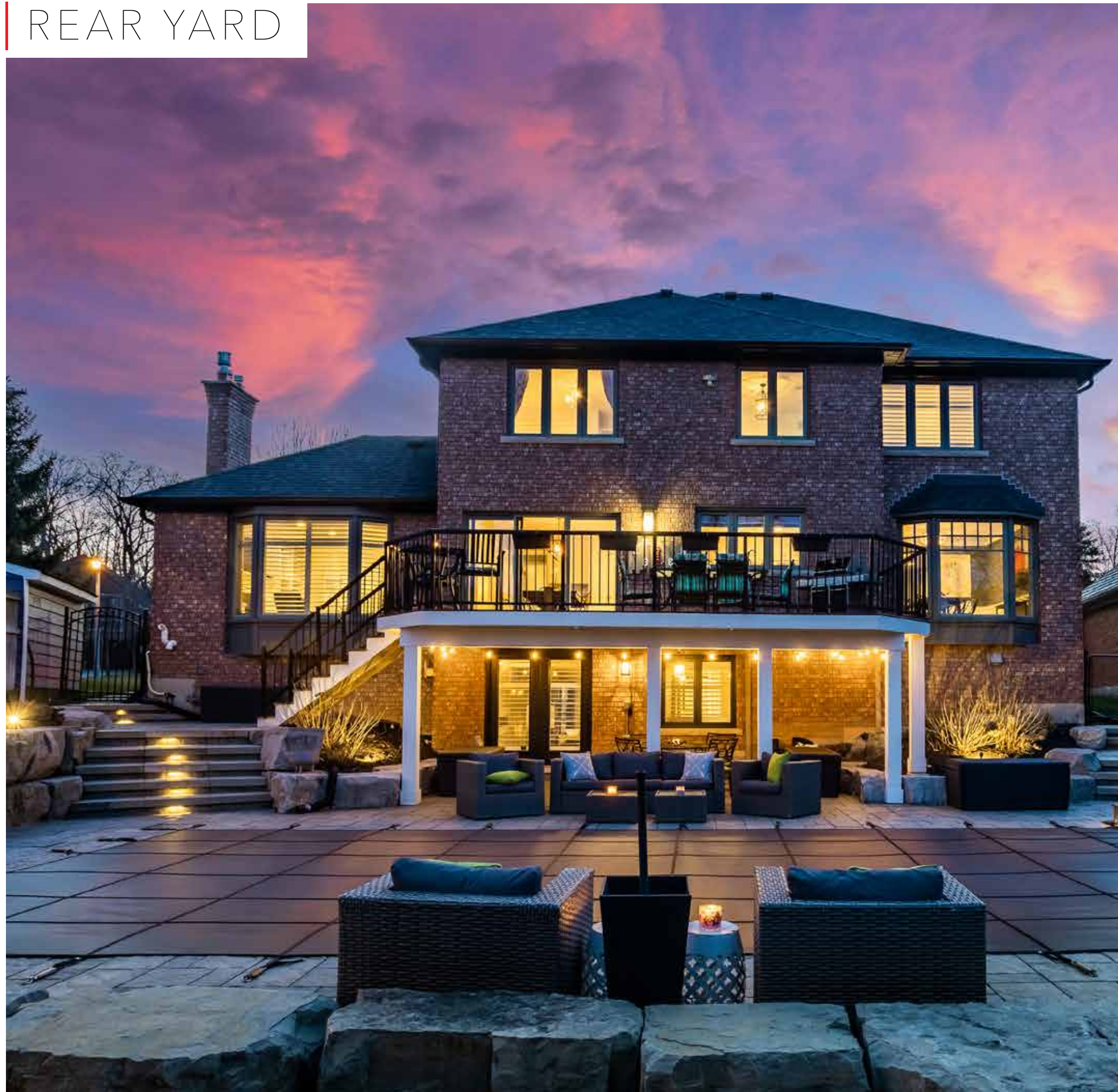
BEDROOM FIVE



LOWER LAUNDRY



REAR YARD



DRONE





TEAM RENE
REAL ESTATE

TEAMRENE.CA | 289.937.1107

4170 FAIRVIEW STREET UNIT #2
BURLINGTON, ON L7L 0G7

REVEL.
REALTY INC., BROKERAGE