

TEAM RENE
REAL ESTATE

43
SUNVALE
PLACE

STONEY CREEK, ON



43 Sunvale Place

3+1 Beds | 3+1 Baths | 2,309 SqFt

Welcome to lakeside living in one of Stoney Creek's most sought-after neighbourhoods, where waterfront trails, parks, everyday amenities, and easy highway access are all just moments from your door. Backing directly onto Newport Yacht Club and steps from the water, this beautifully upgraded 2,309 sq ft townhome offers the space, comfort, and lifestyle. Inviting curb appeal sets the tone with a mature birch tree, perennial gardens, stone retaining wall, interlock walkway, long driveway with gated access, EV charger, and double garage. Inside, a bright open floor plan is filled with natural light and finished with hardwood flooring and crown moulding throughout the main level. A sunken living room with a large bay window offers a welcoming place to unwind, while the dining area flows into the spacious chef's kitchen featuring granite countertops, stainless steel appliances, wall oven, designer range hood, breakfast bar peninsula, wine fridge, and an eat-in area with a walkout to the large patio overlooking the marina & views of Lake Ontario. The family room adds even more everyday comfort with a bay window, gas fireplace & stunning panoramic views of the marina lifestyle! Upstairs, hardwood continues through three well-sized bedrooms, including an expansive primary retreat with a custom walk-in closet, private balcony overlooking the Yacht Club, and a stunning ensuite with dual-sink vanity, freestanding tub and glass walk-in shower. A 3-pc main bath and convenient laundry complete this level. The fully finished lower level offers flexible family space with laminate flooring, a spacious bedroom, 3-pc bath, and walk-in closet. Outside, enjoy a private deck with gorgeous Yacht Club views, expansive seating space, and a walk down to a landscaped interlock stone patio, creating the perfect setting for relaxed family living by the lake.



Lower Level

Main Level

Second Level

Foyer



Dining Room



Living Room

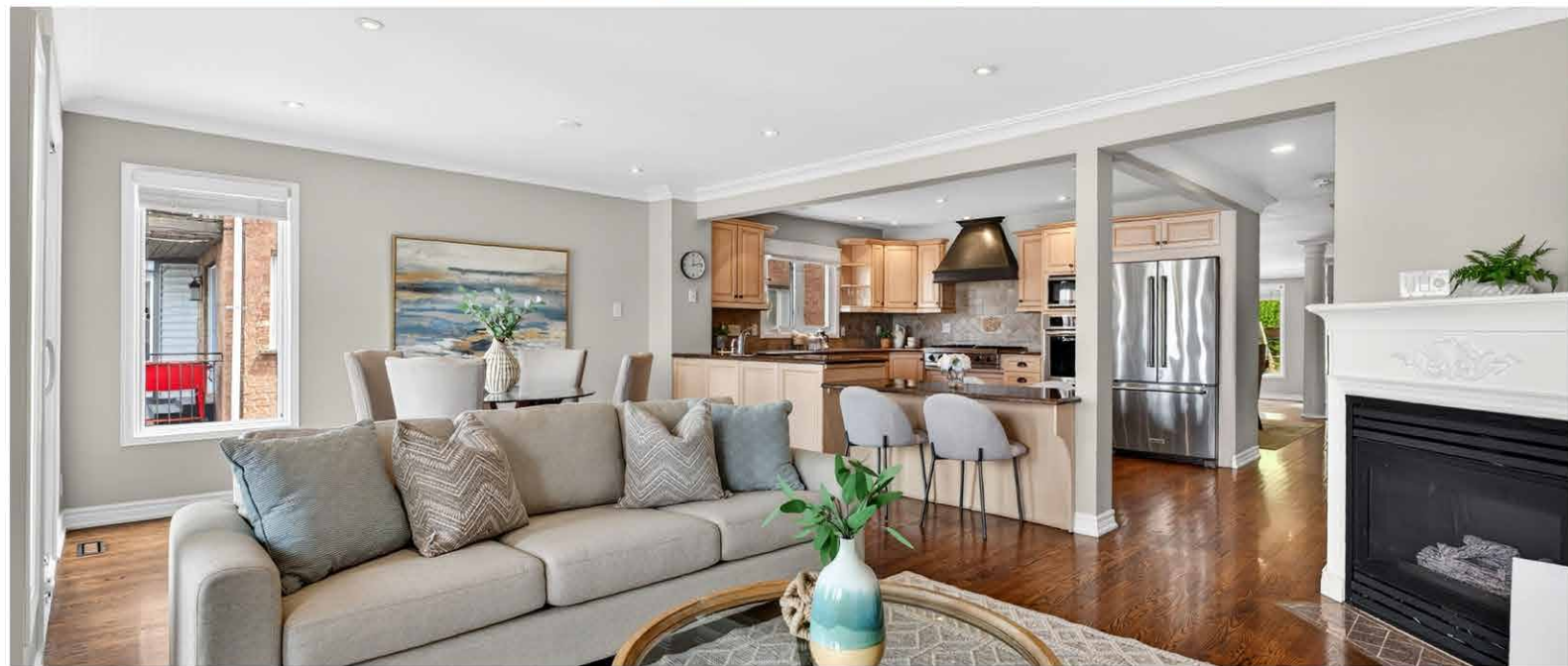
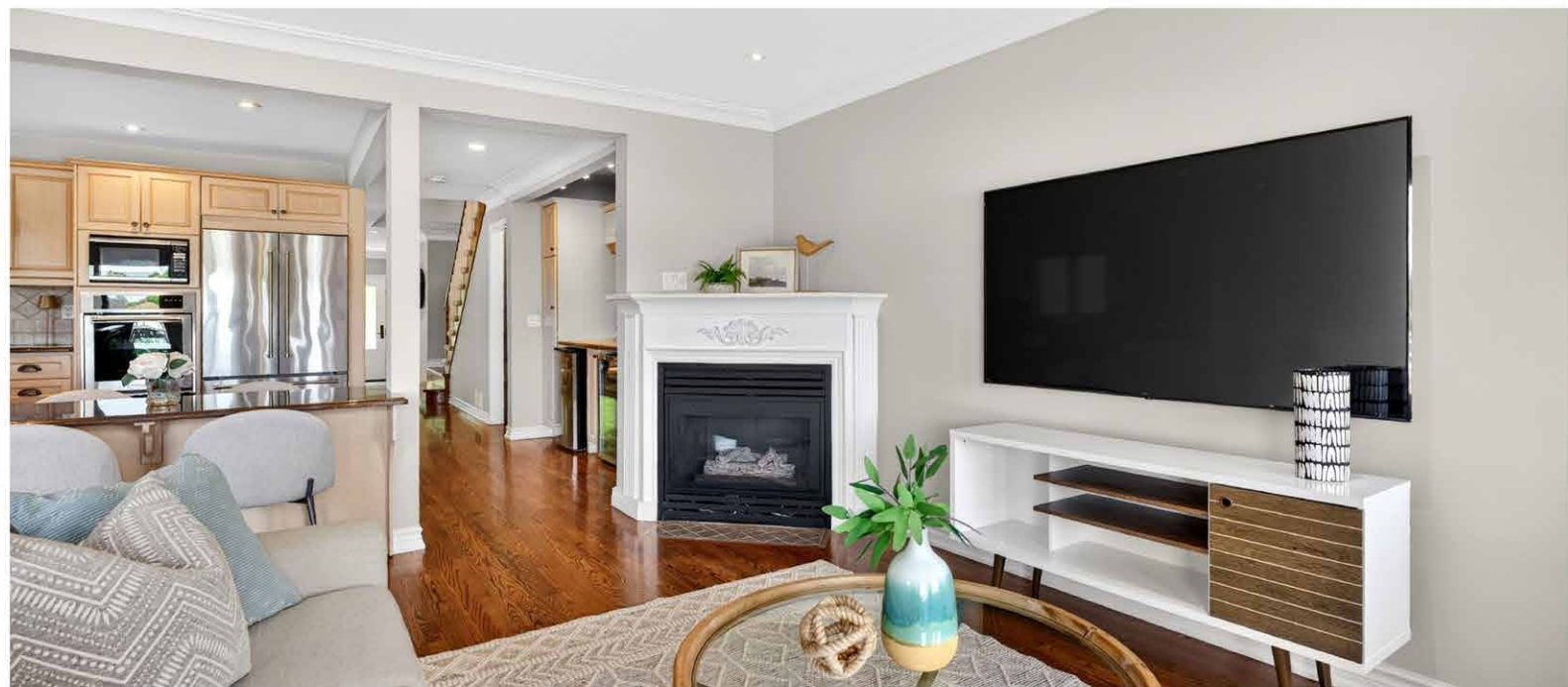


Powder Room



Kitchen

Living Room





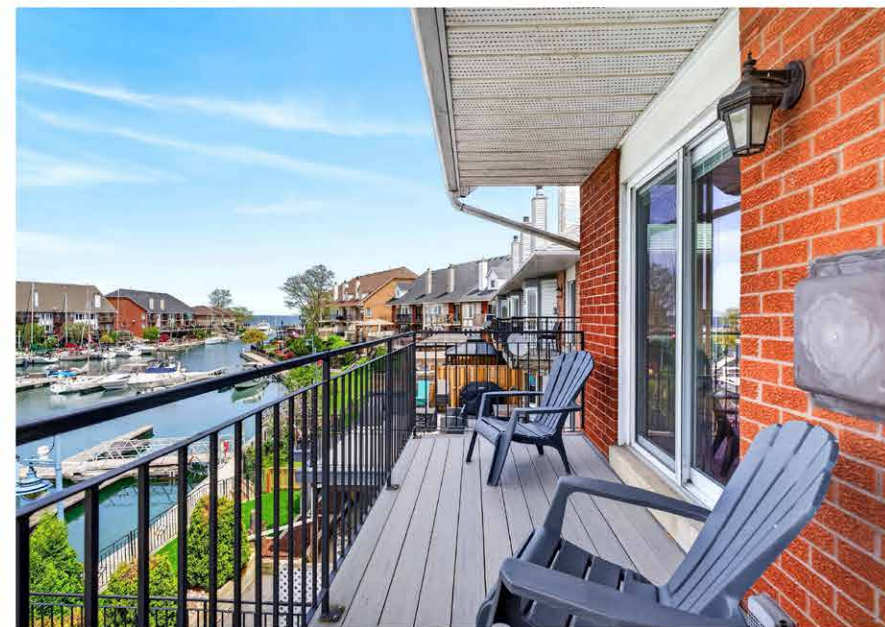
Primary Bedroom



Primary Ensuite



Balcony



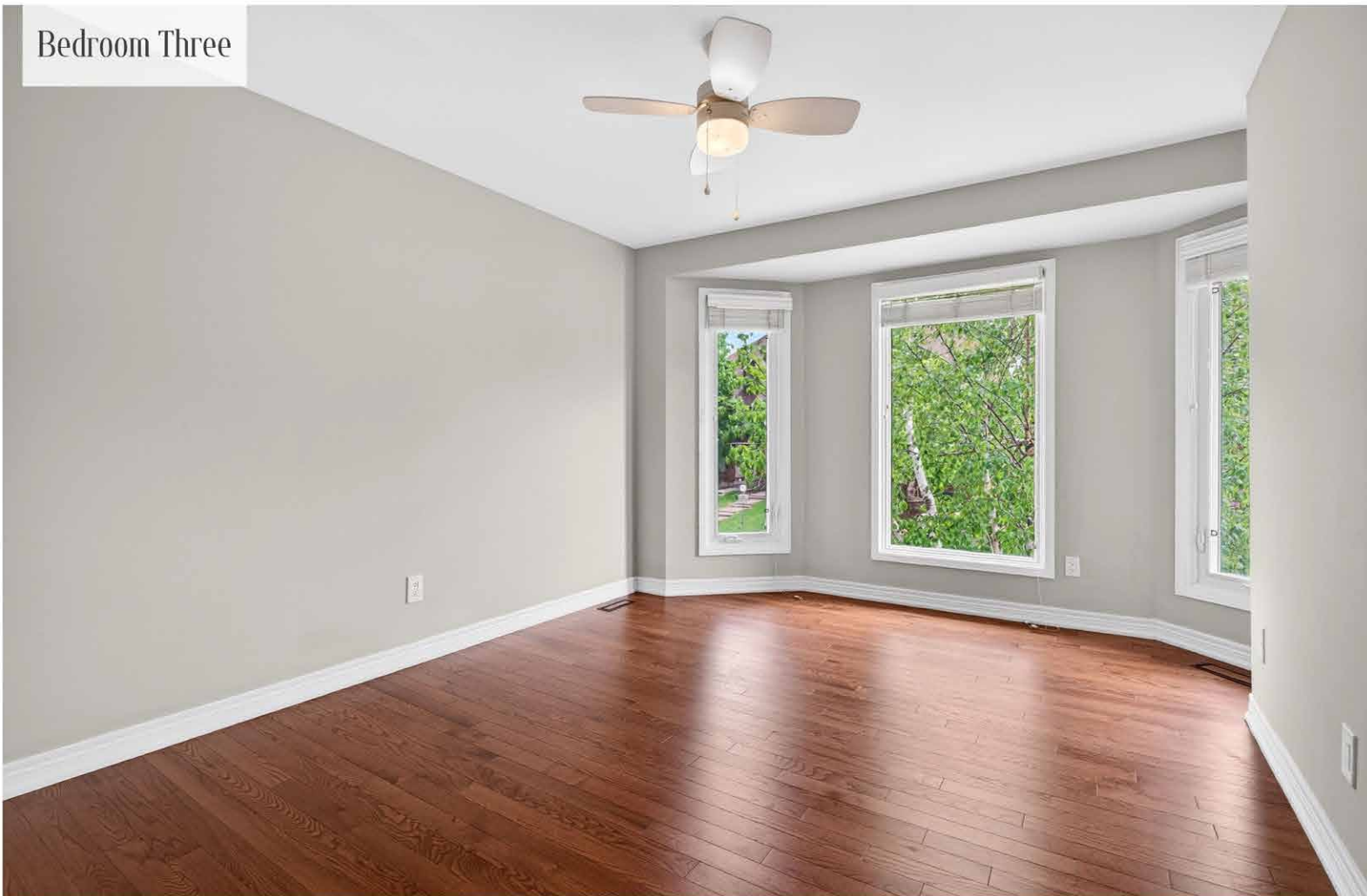
Bedroom Two



Main Bathroom



Bedroom Three



Laundry



Lower Bedroom



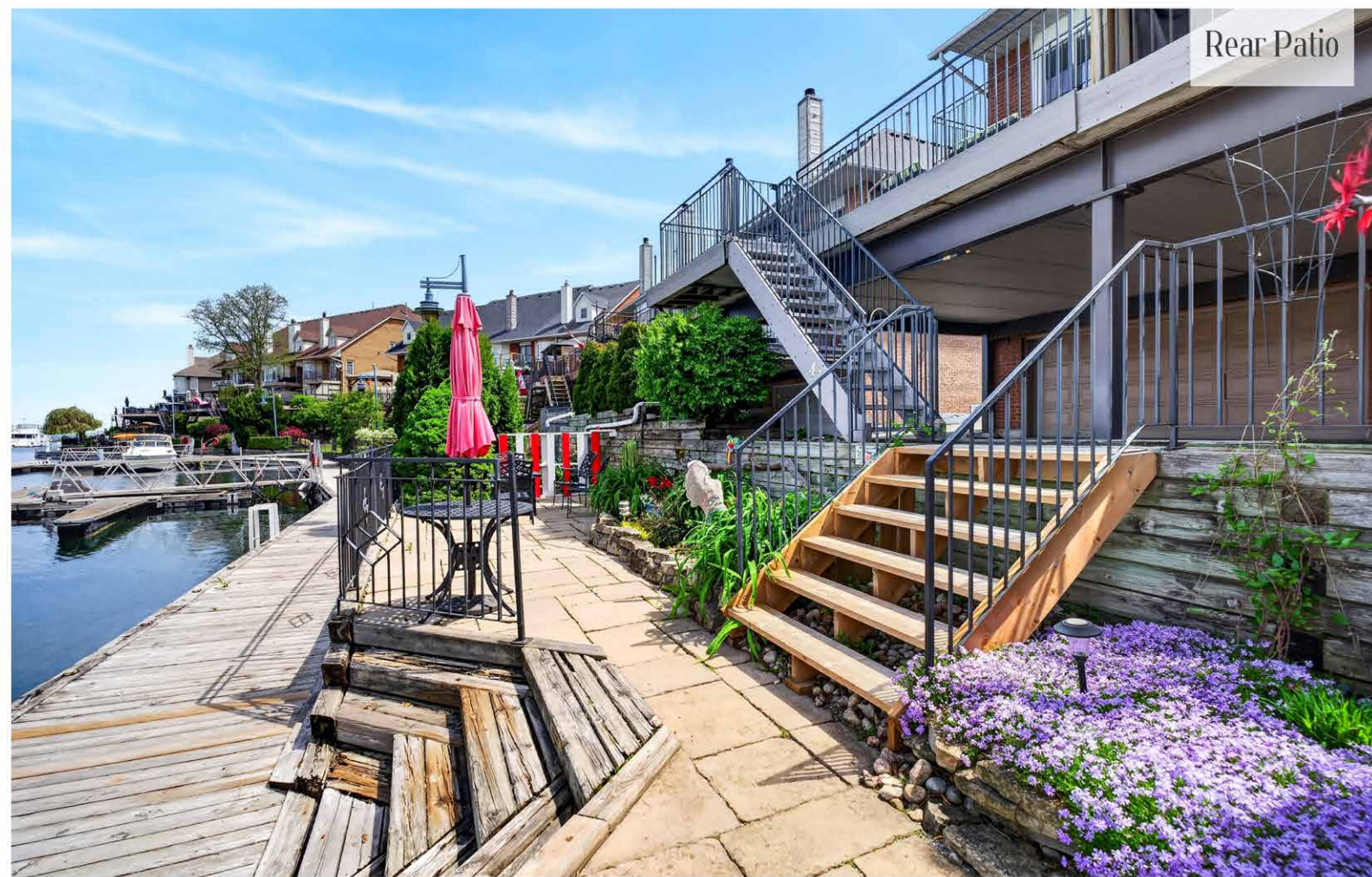
Lower Bathroom



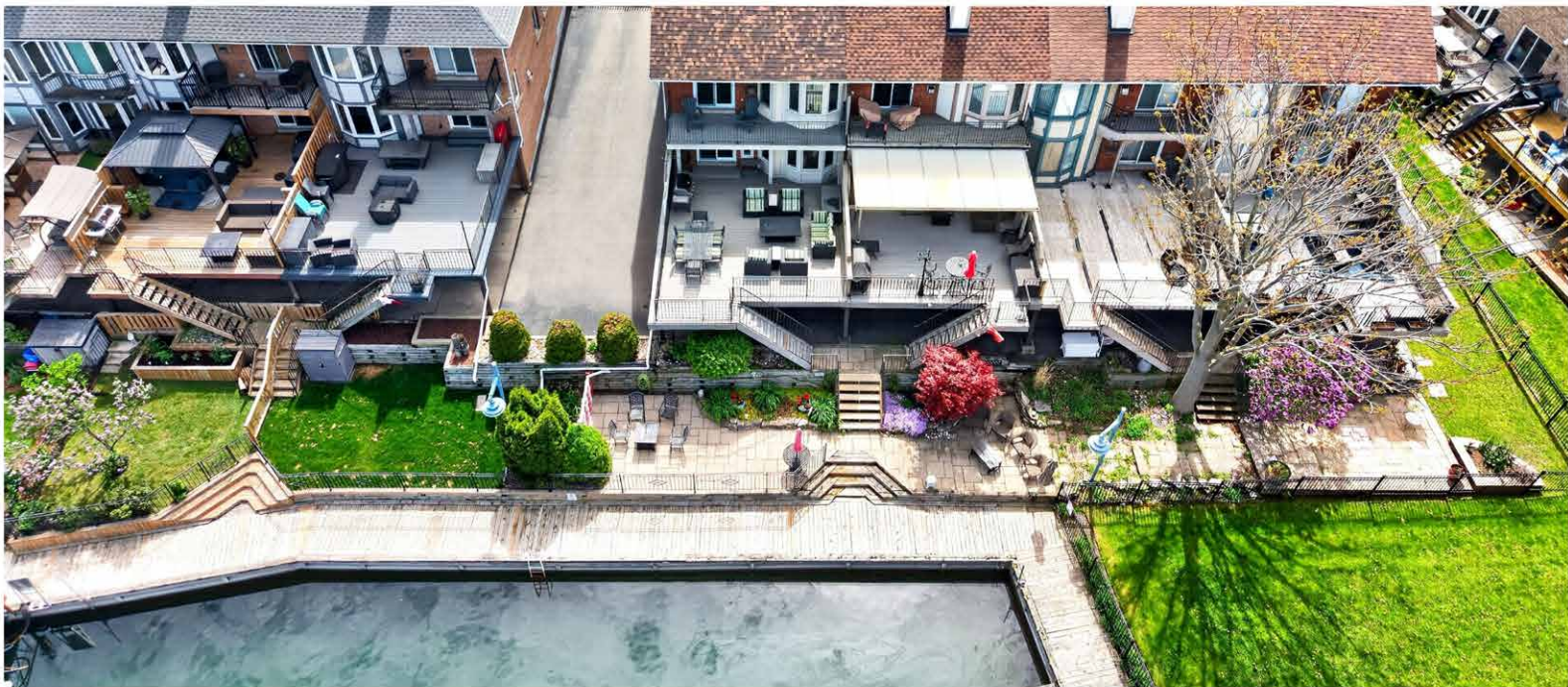
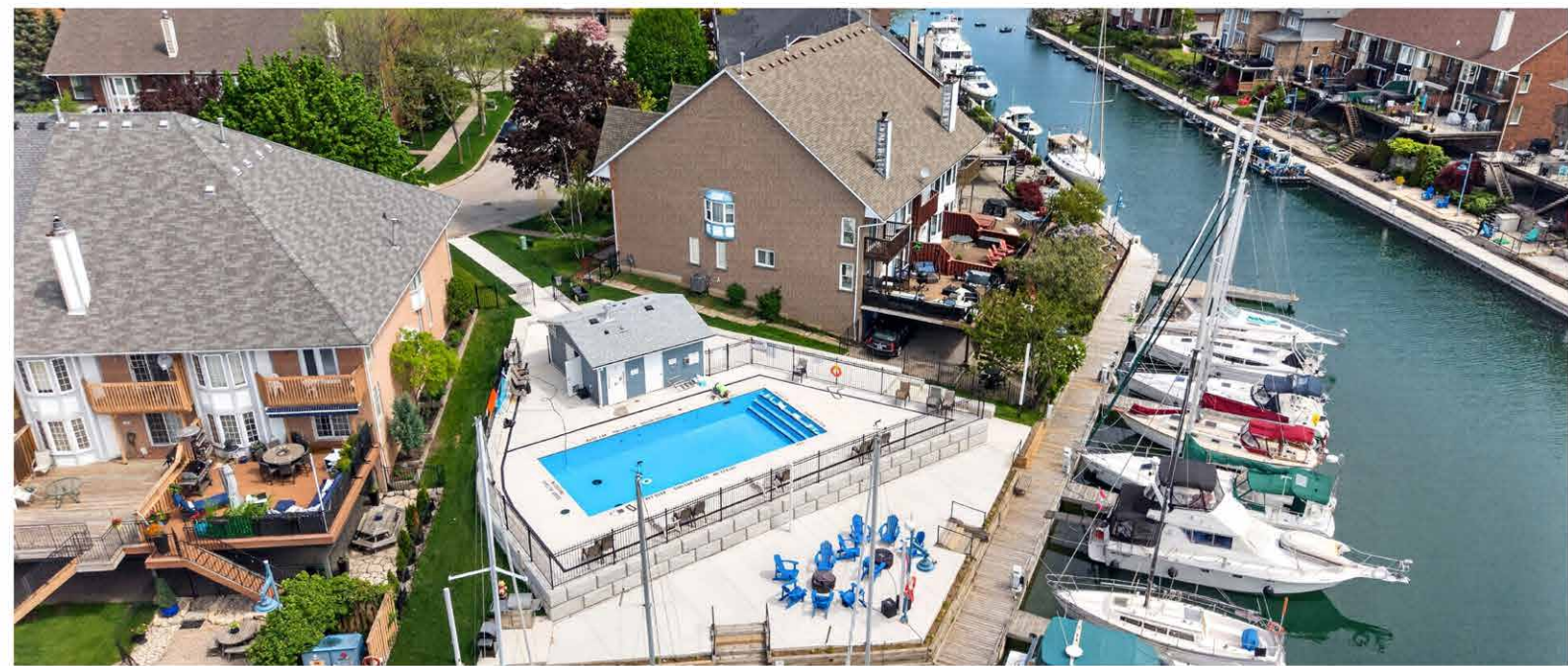
Rear Deck



Rear Patio

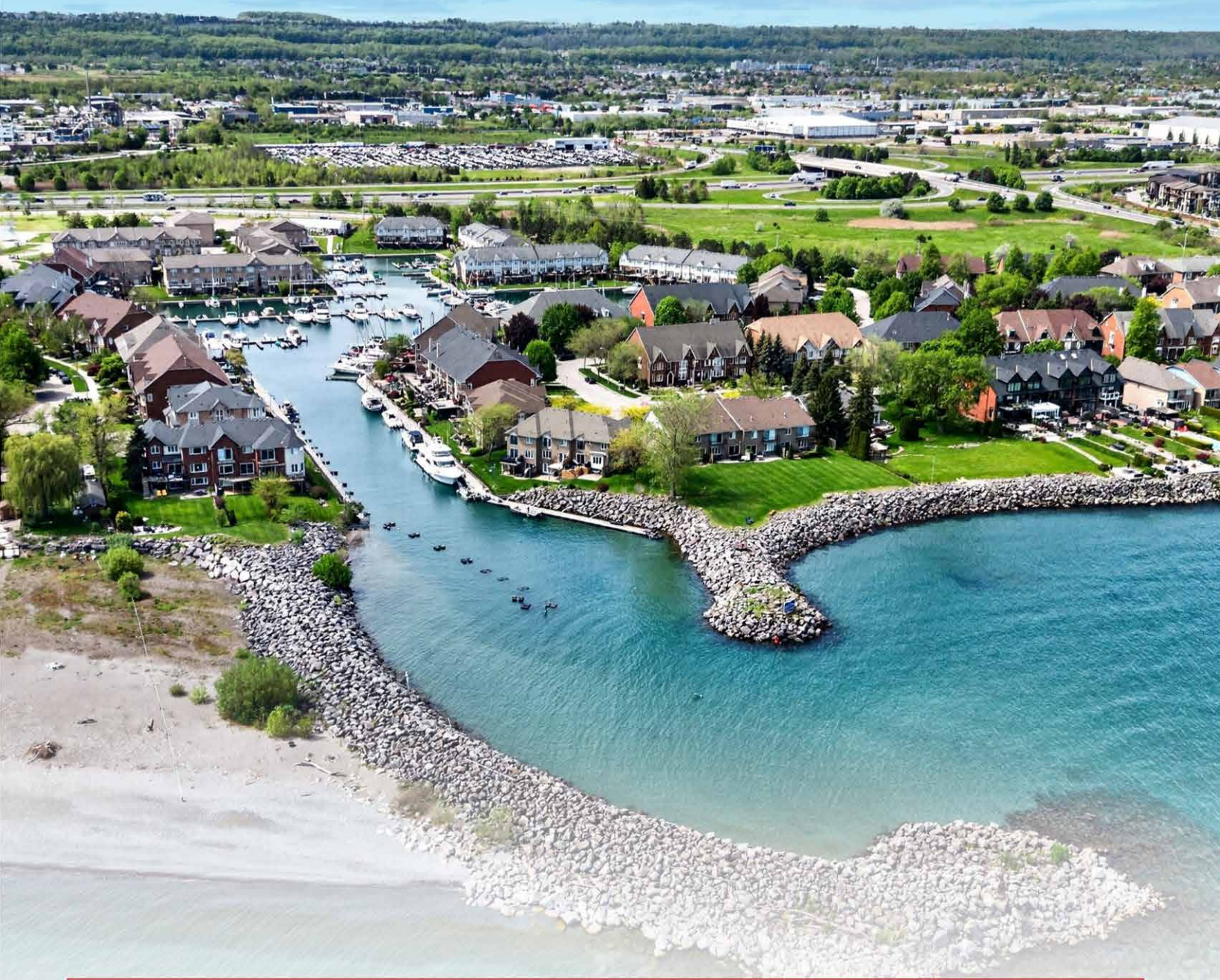


Drone





REAL ESTATE



TEAMRENE.CA | 289.937.1107

BURLINGTON, ON

REVEL 
REALTY INC., BROKERAGE