
406 NORTH SERVICE RD E

OAKVILLE, ON



REVEL.
REALTY INC., BROKERAGE

COMMERCIAL
E1 ZONING

406 NORTH SERVICE ROAD EAST

FLOORPLANS & FEATURES

2,242 SQFT | 7 OFFICES | E1 ZONING

- Seven separate offices
- Ability to rent front or back offices
- All utilities, cleaning services & internet included
- Lots of parking space
- Great reception/lobby area
- Board/meeting room
- Two bathrooms
- Kitchen



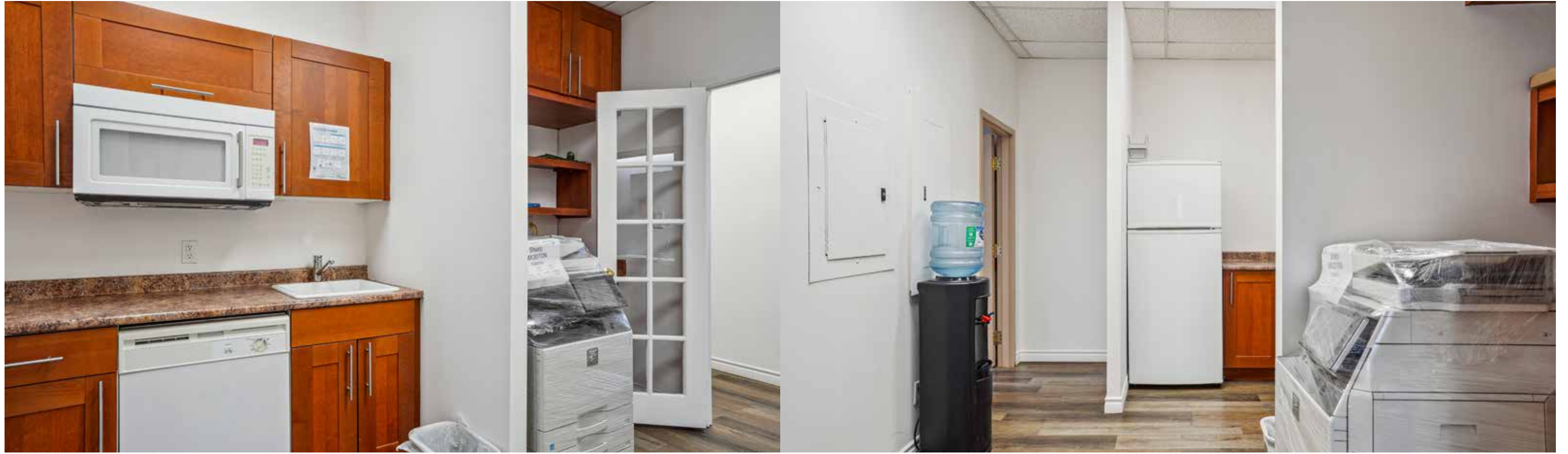
LOBBY



MEETING ROOM



KITCHEN/STAFF AREA



HALLWAY



WASHROOM



OFFICE ONE



OFFICE TWO



OFFICE THREE



OFFICE FOUR



OFFICE FIVE



OFFICE SIX



OFFICE SEVEN



EMPLOYMENT ZONES

10.2 Permitted Uses

Uses permitted in the Employment Zones are denoted by the symbol “✓” in the column applicable to that Zone and corresponding with the row for a specific permitted use in Table 10.2, below.

	E1	E2	E3	E4
Adult entertainment establishment		✓ (4)(10)	✓ (4)(10)	
Art gallery (2016-023)	✓ (5)	✓ (6)(7)		✓
Business office	✓	✓	✓ (1)	✓
Bulk storage facility			✓	
Commercial school (PL140317)	✓	✓		✓
Commercial self-storage		✓	✓	✓
Community centre				✓
Conservation use	✓	✓	✓	✓
Contractors establishment	✓	✓	✓	✓
Day care (PL140317)	✓ (5)(17)	✓ (17)		✓ (17)
Drive-through facility	✓ (5)(8)	✓ (6)(7)(8)		✓ (8)
Dry cleaning depot (PL140317)	✓ (5)			✓
Dry cleaning/laundry establishment (PL140317)		✓	✓	
Emergency service facility	✓	✓	✓	✓
Financial institution	✓ (5)	✓ (6)(7)		✓
Food bank	✓	✓		✓
Food production	✓ (2)	✓		✓
Funeral home				✓
Hotel	✓	✓		✓
Manufacturing	✓ (2)	✓	✓	
Medical office	✓	✓		✓
Motor vehicle body shop				✓ (8)(13)
Motor vehicle dealership				✓ (8)(14)
Motor vehicle rental facility				✓ (13)(14)
Motor vehicle repair facility				✓ (13)
Motor vehicle service station				✓ (15)
Motor vehicle storage compound			✓	
Motor vehicle washing facility				✓ (8)(16)

	E1	E2	E3	E4
Outside display and sales area		✓		✓ (11)
Outside processing			✓	
Outside storage (2021-068)		✓(18)	✓(18)	
Park, public	✓	✓	✓	✓
Parking area, heavy vehicle (2021-068)		✓(18)	✓(18)	
Pet care establishment				✓
Place of entertainment				✓
Place of worship (PL140317)	✓ (5)(12)	✓ (6)(7)(12)		✓ (12)
Public hall	✓	✓		✓
Public works yard		✓	✓	
Rental establishment		✓	✓	✓
Repair shop (2017-025)	✓ (2)	✓	✓	✓
Restaurant	✓ (5)	✓ (6)(7)		✓
Retail propane and transfer facility				✓
Retail store	✓ (5)			✓ (11)
Retail store, accessory and showroom	✓ (3)	✓ (3)	✓ (3)	
School, private (PL140317)	✓	✓ (17)		✓
Service commercial establishment	✓ (5)			✓
Sports facility	✓ (9)	✓ (9)	✓ (2)	✓ (9)
Stormwater management facility	✓	✓	✓	✓
Taxi dispatch	✓	✓	✓	✓
Training facility	✓	✓	✓	✓
Transportation terminal			✓	
Veterinary clinic (PL140317)		✓		✓
Warehousing	✓ (2)	✓	✓	
Waste processing station			✓ (4)	
Waste transfer station			✓ (4)	
Wholesaling		✓	✓	

Additional Regulations for Permitted Uses Table 10.2

1. Permitted only in conjunction with another permitted use and shall not exceed a maximum of 25% of the net floor area on the lot.
2. Permitted only where the use legally existed on the lot on the effective date of this By-law.
3.
 - a) The maximum net floor area for an accessory retail store and showroom shall be the lesser of a maximum net floor area of 15% of the net floor area of the main use or 250.0 square metres (PL140317); and,

Proposals for a new use on a lot where the use did not exist on the effective date of this By-law will require a planning approval. Contact Planning Services for more information.



OAKVILLE PLACE

QEW

406 NORTH SERVICE RD E

Tim Hortons



MARTINE DENNIS

SALES REPRESENTATIVE

📞 905-220-0884
✉️ martine@revelrealty.ca
📷 @martinedennis_realtor

RENE ILLESCAS

SALES REPRESENTATIVE

📞 289-937-1107
✉️ rene@teamrene.ca
📷 @rene.realtor
🌐 www.teamrene.ca

